

Njord

Quick reference guide



Download Product Manual

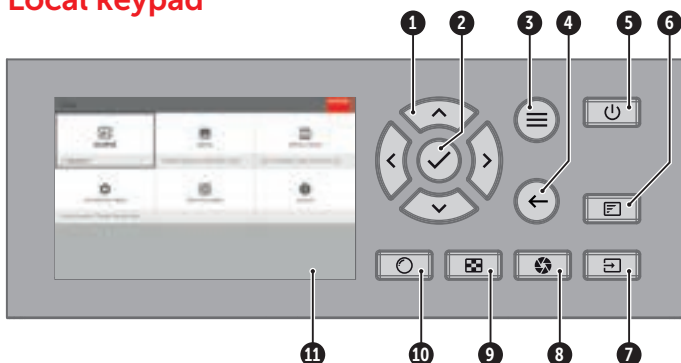
Product manuals and documentation are available online at www.barco.com/td/R9010032
Registration may be required; follow the instructions given on the website.

IMPORTANT!

Read Installation Instructions before connecting equipment to the mains power supply.





Local keypad

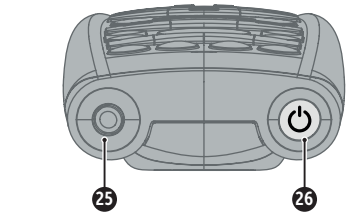
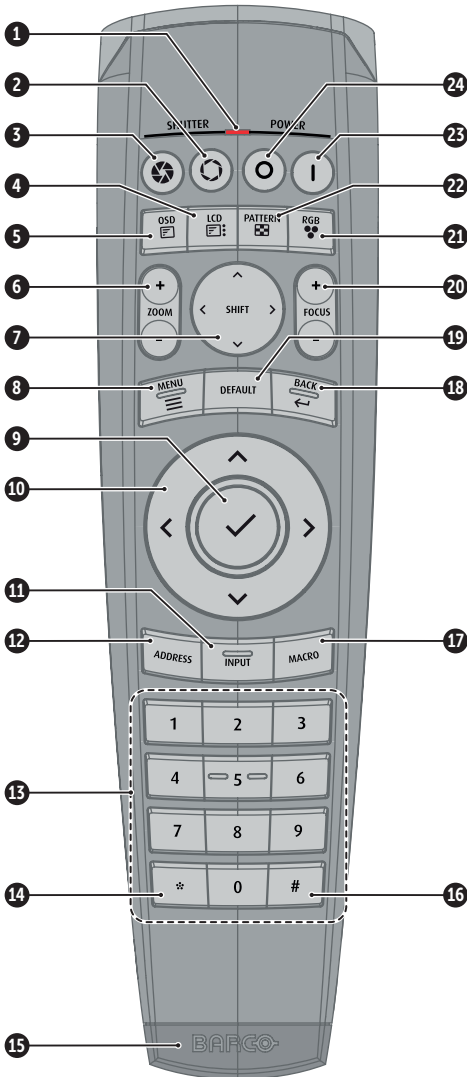


- 1 Menu Navigation
- 2 Menu Selection
- 3 Open Menu
- 4 Menu Back
- 5 Power On/Off
- 6 OSD On/Off
- 7 Input Selection
- 8 Shutter Open/Close
- 9 Test Patterns
- 10 Lens Menu
- 11 LCD Panel

Button backlight status

BUTTON	COLOR STATUS	DESCRIPTION
Power button 	Blinking WHITE	Projector starts up (Booting)
	Solid WHITE	Projector is in Standby
	Blinking RED	Error condition
	Blinking BLUE	Projector goes to ON mode
	Solid BLUE	Projector is ON
Shutter button 	Off	Projector not in power ON state
	Solid WHITE	Shutter is open
	Solid RED	Shutter is closed

RCU buttons



- 1 Button pressed indicator
- 2 Shutter Open
- 3 Shutter Close
- 4 LCD panel On/Off
- 5 OSD On/Off
- 6 Lens Zoom
- 7 Lens Shift
- 8 Menu Open/Close
- 9 Menu Selection, OK button
- 10 Menu Navigation
- 11 Input Selection
- 12 Address button
- 13 Numeric buttons
- 14 Backspace (when entering values)
- 15 XLR connector
- 16 Decimal mark (when entering values)
- 17 Macro button
- 18 Menu Back
- 19 Default button
- 20 Lens Focus
- 21 Color menu
- 22 Test Patterns
- 23 Power On
- 24 Power Off
- 25 3.5 mm jack
- 26 RCU On/Off

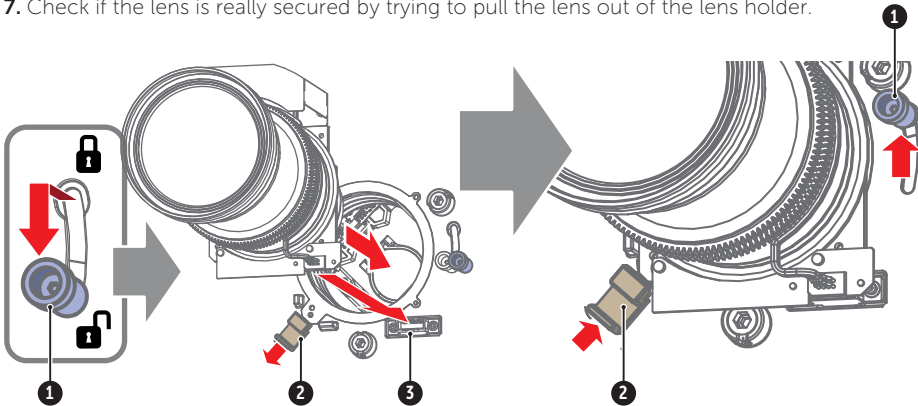
RCU batteries

- Two AA size batteries. Use alkaline batteries for optimum range and life time.
- Replacing batteries will reset the broadcast address of the RCU to its default value '0'.
- Replacing batteries switches on the RCU automatically.

Install Lens

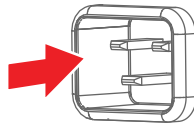
!! ONLY USE TLD+ Zoom Lenses !!

1. Place the primary lens lock in "unlock" position. Handle (ref. 1) towards electrical socket (ref 3).
2. If present, remove the plastic protection cover from the lens holder opening.
3. Check if the secondary lens lock stands in the "unlock" position (ref 2).
4. Gently insert the lens. Ensure the lens connector matches the electrical socket on the lens holder.
5. Insert the lens until the connector seats into the socket.
 - The secondary lens lock (ref. 2) makes an audible clicking sound when latching.
 - Do not release the lens holder by sliding the primary lens lock handle into the "locked" position.
6. Check if the lens touches the front plate of the Lens Holder.
7. Check if the lens is really secured by trying to pull the lens out of the lens holder.



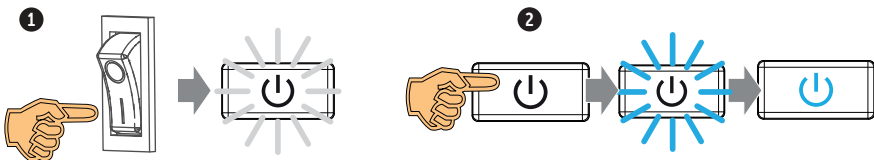
Connect power

Ensure that the power is properly connected to the power input.
(120-180V / 200-240V, 60 - 50Hz).



Start up

1. **Power on.** Turn the mains switch to on (I).
 - Startup sequence starts. Backlight of the Power on / off button flashes WHITE.
 - When startup sequence is finalized the Power on / off button will be lit WHITE.
2. **Press the Power on / off button.**
 - The backlight of the Power on / off button changes from WHITE to BLUE.
 - local LCD displays a startup screen.

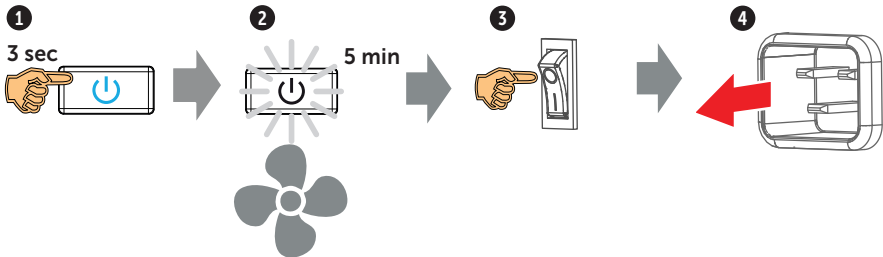


Switch off

1. Press the **Power on/off button** for three seconds.
2. Wait until the **after-cooling cycle is finished** (approximately 5 minutes).
3. Turn the **mains switch to off** ('0').
4. **Unplug the power cord** from the projector.

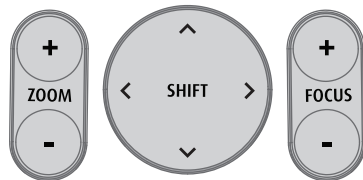
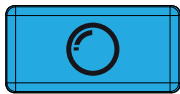
Note

Please allow the projector to cool down properly as this will positively impact the lifetime of its components.



Adjust

1. **Adjust the lens settings** by pressing the lens menu button on the keypad or via the zoom, shift and focus buttons on the RCU.



2. **Orientation** of the unit is set as standard in table front projection mode.
Change the projector set up in the **INSTALLATION > ORIENTATION** menu.
3. For **Advanced adjustments** like Warping, Light management, etc. see projector User Guide.

Precautions



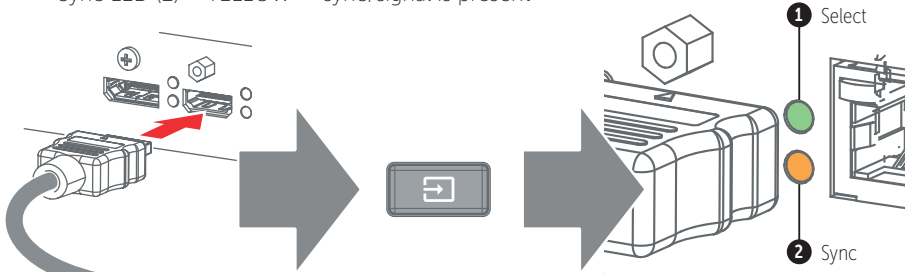
- Remove the lens before transporting the projector.
- Switch the projector to standby mode and wait until the after-cooling cycle is finished before switching off the main power.
- Ensure the projector is operating with clean filters.
- Do not block the ventilation in and outlets of the projector and chiller (if used).
- External laser light can cause severe damage to the DMD. This damage is not covered by warranty.

Connect and select source

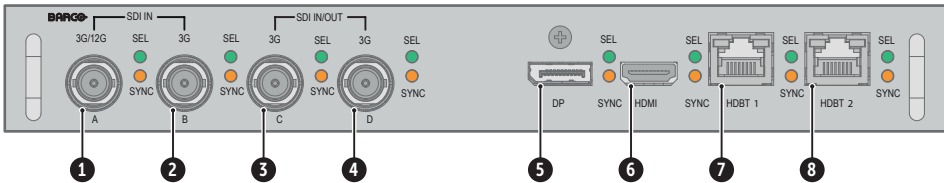
1. Connect available sources to the appropriate input ports.

2. Select connected source:

- Select LED (1) = GREEN -> Port configured as input. Image appears on the screen
- Select LED (1) = Blinking GREEN -> Bidirectional port configured as output/loopthrough
- Sync LED (2) = YELLOW -> sync/signal is present

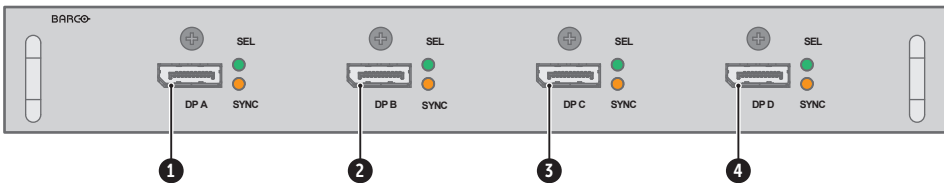


Quad combo input card



- | | |
|--------------------------------------------------------------------------------------------------------------------------------------------------------------------------------------------------------------------------------------|-----------------------------------------------------------------------------------------------------------------------------------------------------------|
| <ul style="list-style-type: none"> ❶ Quad SDI channel A: 3G/12G input ❷ Quad SDI channel B: 3G input ❸ Quad SDI channel C: 3G input or 3G/12G output ❹ Quad SDI channel D: 3G input/output | <ul style="list-style-type: none"> ❺ DisplayPort 1.2 Input ❻ HDMI 2.0 Input ❼ HDBaseT Input 1 ❽ HDBaseT Input 2 |
|--------------------------------------------------------------------------------------------------------------------------------------------------------------------------------------------------------------------------------------|-----------------------------------------------------------------------------------------------------------------------------------------------------------|

Quad DP1.2 input card



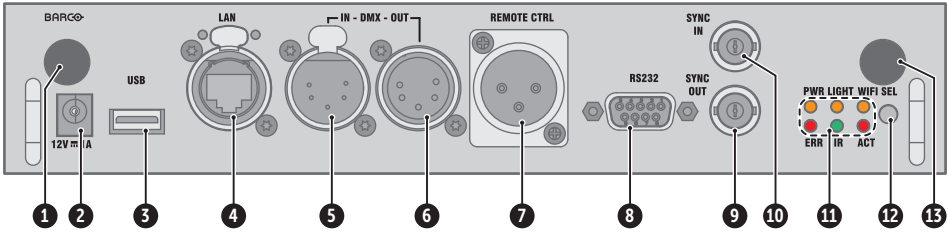
- | | |
|------------------------------------------------------------------------------------------------------------------------------------------|------------------------------------------------------------------------------------------------------------------------------------------|
| <ul style="list-style-type: none"> ❶ Quad DisplayPort 1.2 channel A Input ❷ Quad DisplayPort 1.2 channel B Input | <ul style="list-style-type: none"> ❸ Quad DisplayPort 1.2 channel C Input ❹ Quad DisplayPort 1.2 channel D Input |
|------------------------------------------------------------------------------------------------------------------------------------------|------------------------------------------------------------------------------------------------------------------------------------------|

Support

Website www.barco.com/esupport

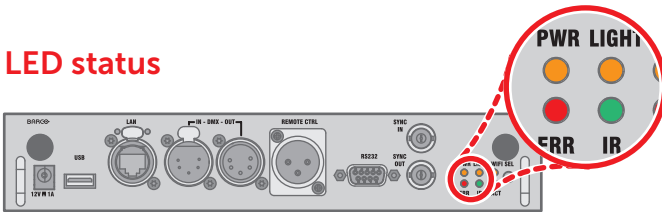
Tel.: - USA +1 866 374 7878
 - EMEA +32 56 36 8019
 - APAC +86 400 88 22726

Communication panel



- 1 WiFi antenna for wireless IP (optional)
- 2 12V 1A output
- 3 Firmware update/Download log files
- 4 10/100 base-T for external control over IP / Art-Net
- 5 DMX interface input
- 6 DMX interface output
- 7 XLR input for wired projector control
- 8 RS232 for serial communication
- 9 Sync Out 3D
- 10 Sync In 3D
- 11 Status lights
- 12 IR receive sensor
- 13 GSM antenna input (optional)

LED status



LED	COLOR STATUS	DESCRIPTION
PWR (power LED)	Off	No power
	RED	Projector is in Standby
	ORANGE	Projector is Ready
	GREEN	Projector is on
LIGHT (Illumination LED)	Off	Light source is off
	RED	Light source not detected
	GREEN	Light source is on in normal mode
	GREEN-ORANGE	Light source is on in CLO mode
ERR (error LED)	Off	No error
	RED toggles on/off	Error
	ORANGE toggles on/off	Warning / Software update
IR	RED	IR signal received
	GREEN	IR signal acknowledged